

BILL OF MATERIALS

ITEM NUMBER	Description	Quantity
1	3/4" Quick Seal	1
2	1-1/2" Close Nipple	1
3	3/4" x 3" Nipple	1
4	3/4" 90° Elbow	2
5	3/4" x 5" Nipple	1
6	3/4" Union	3
7	3/4" Close Nipple	6
8	3/4" x 3/4" x 1/4" Tee	2
9	1/4" Square Head Pipe Plug	2
10	White Rodgers 36C68-877 3/4" Combination Valve	1
11	3/4" x 3-1/2" Nipple	1
12	Maxitrol M511 3/4" Modulating Valve	1
13	3/4" Manual Ball Valve	1
14	3/4" x 5" Nipple	2
15	6" or 12" Midco Dual Fuel Burner	1
16	1-1/2" x 3/4" Reducing 90° Elbow	1

NOTES:

Gas Type: Natural or LP

Inlet Pressure: 7 in. w.c. - 14 in. w.c.

Max. Natural Gas Manifold Pressure: 5 in. w.c.

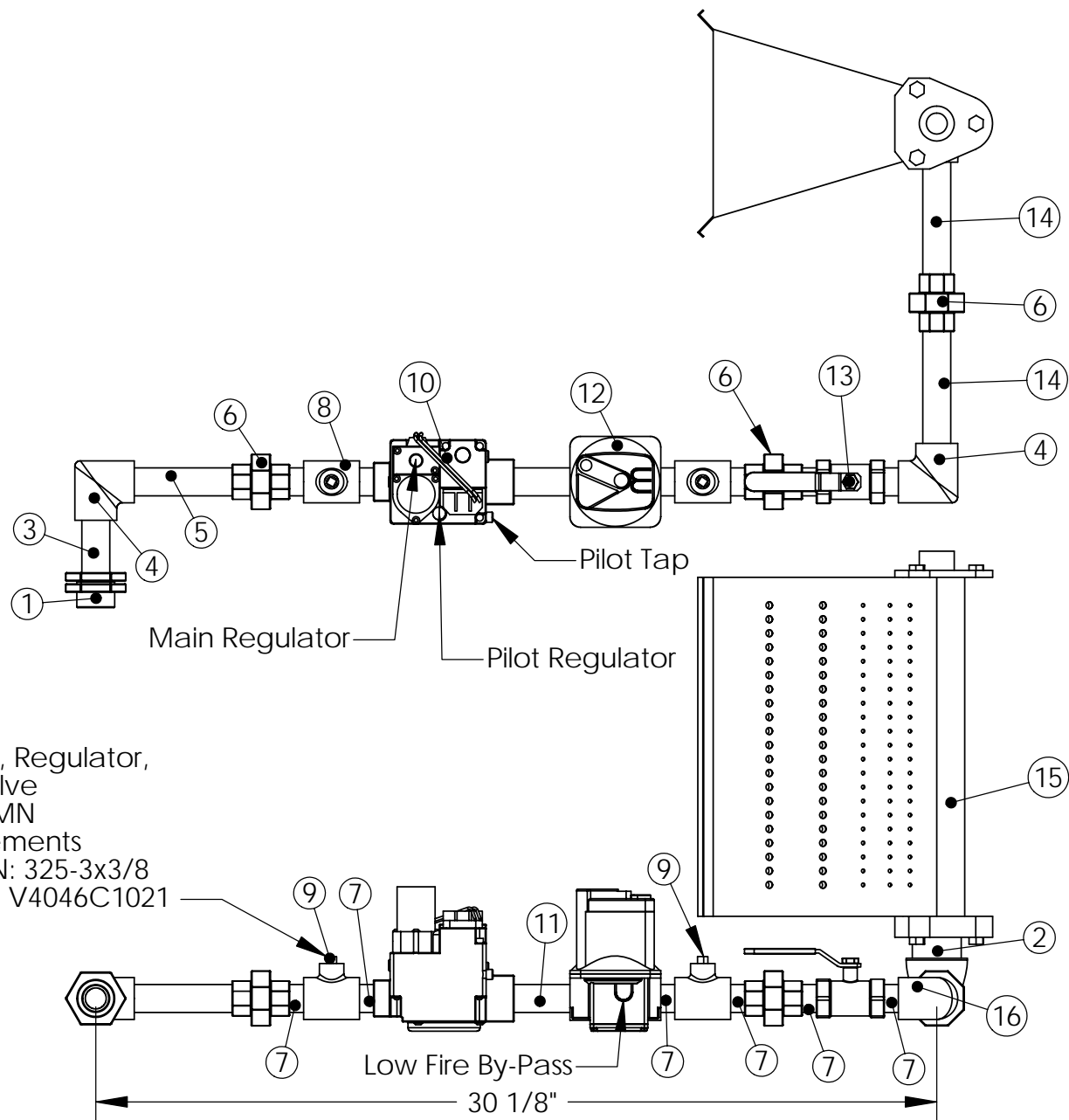
Max. LP Manifold Pressure: 2.5 in. w.c.

External Ball Valve Shipped Loose in Control Cabinet

External High Gas Pressure Regulator Required when gas pressure exceeds 14 in. w.c.:

P/N = 143-80-2-3/4-G-5/8 (10 psi. max.)

Pilot Solenoid, Regulator,
& Manual Valve
Location for MN
State Requirements
Regulator P/N: 325-3x3/8
Solenoid P/N: V4046C1021



CONFIDENTIAL

Drawing Name: DF 1 Gas Train

Drawing Revision: 3

Material: N/A

Comments: N/A

Part Number: N/A

Part Revision: N/A

Cutsizes: N/A x N/A

Job#: N/A

Drawn By: BRH

Sheet: 1 of 2

Quantity: 1

Configuration: Standard

Parent Assembly: DF 1

Weight: N/A lbs

ITEM NUMBER	Description	Quantity
1	3/4" Quick Seal	1
2	1-1/2" Close Nipple	1
3	3/4" x 3" Nipple	1
4	3/4" 90° Elbow	2
5	3/4" x 5" Nipple	1
6	3/4" Union	3
7	3/4" Close Nipple (1-1/2")	6
8	3/4" x 3/4" x 1/4" Tee	2
9	1/4" Square Head Pipe Plug	2
10	White Rodgers 36C68-877 3/4" Combination Valve	1
11	3/4" x 3-1/2" Nipple	1
12	Maxitrol M511 3/4" Modulating Valve	1
13	3/4" Manual Ball Valve	1
14	3/4" x 5" Nipple	2
15	6" or 12" Mdc0 Dual Fuel Burner	1
16	1-1/2" to 3/4" 90° Elbow	1
17	1/4" Close Nipple (1")	4
18	1/4" x 1/4" x 1/4" Tee	2
19	Optional Antunes HGP-A M1 Pressure Sw itch	1
20	Optional Antunes LGP-A M1 Pressure Sw itch	1

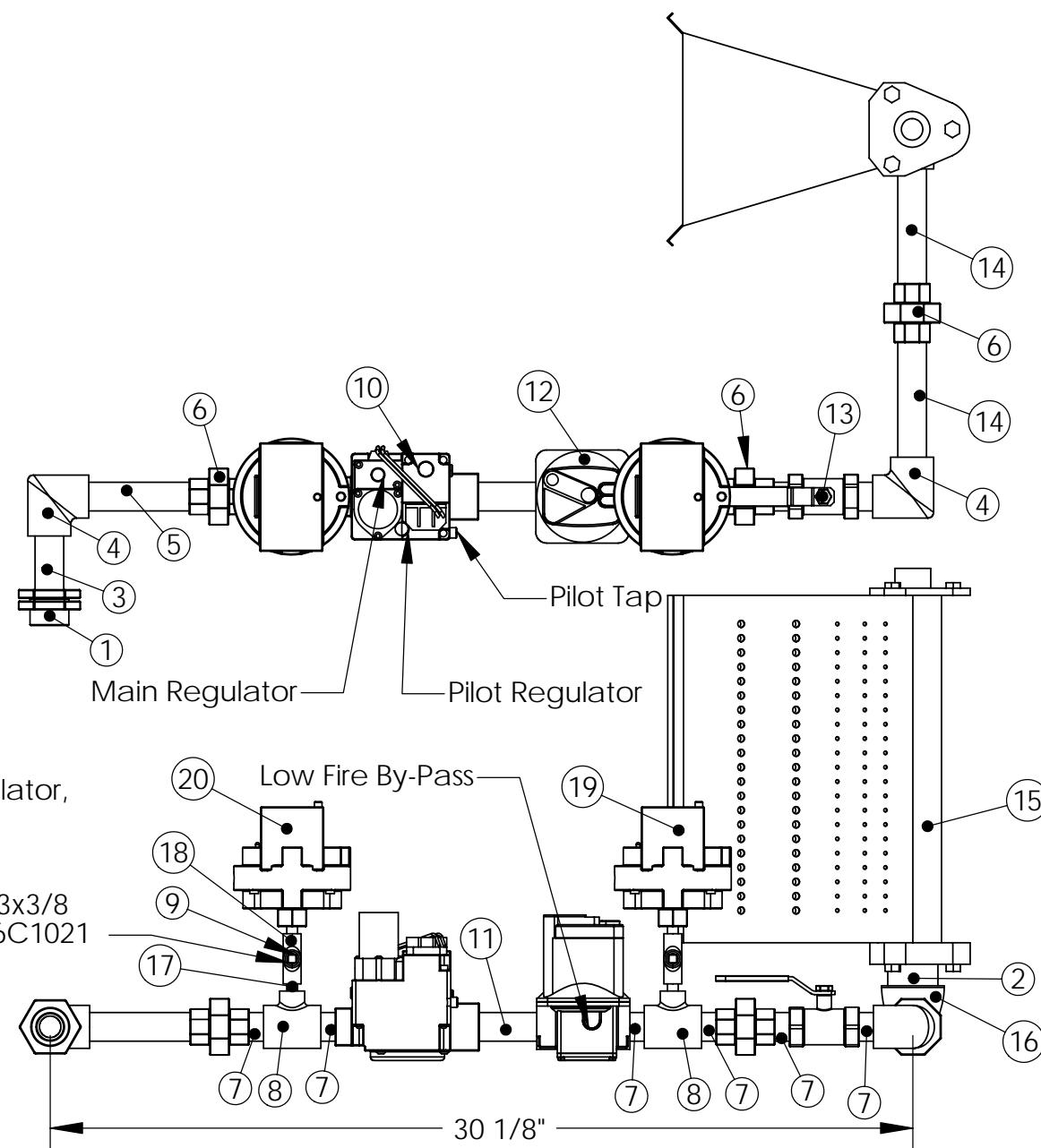
NOTES:

Gas Type: Natural or LP
 Inlet Pressure: 7 in. w.c. - 14 in. w.c.
 Max. Natural Gas Manifold Pressure: 5 in. w.c.
 Max. LP Manifold Pressure: 2.5 in. w.c.

External Ball Valve Shipped Loose in Control Cabinet

External High Gas Pressure Regulator Required when gas pressure exceeds 14 in. w.c.:
 P/N = 143-80-2-3/4-G-5/8 (10 psi. max.)

Pilot Solenoid, Regulator, & Manual Valve Location for MN State Requirements
 Regulator P/N: 325-3x3/8
 Solenoid P/N: V4046C1021



CONFIDENTIAL

Drawing Name: DF 1 Gas Train		Drawing Revision: 3	
Part Number: N/A		Part Revision: N/A	
Drawn By: BRH		Sheet: 2 of 2	
Parent Assembly: DF 1		Weight: N/A lbs	

Material: N/A	Comments: N/A
Cutsizes: N/A x N/A	Job#: N/A
Quantity: 1	Configuration: Gas Pressure Switch Option